



**Norfolk Winter Birdlife – 20<sup>th</sup> to 22<sup>nd</sup> January 2012**



**Tour Leader: Danny Green**

## **Itinerary**

**Day 1:** We are all due to arrive at The George Hotel, The High Street, Cley, NR25 7RN, [www.thegeorgehotelatcley.co.uk](http://www.thegeorgehotelatcley.co.uk) at around 12 midday. We will check in to our rooms and then get out for our afternoon session of photography. We will hopefully be working on waders and buntings and then a session on a local barn owl towards dusk. In the evening we shall have an evening meal at The George and then some image reviews of the days shoot, so bring a laptop or a pen drive so we can see some work.



**Day 2:** It's an early start in the morning to a local barn owl site to try our luck for some photography and then we will go back to The George for breakfast. In the morning we will have another go for some waders. In the afternoon we will look for some pink-footed geese flocks feeding in sugar beet fields and if time allows us try again at another barn owl location. In the evening back at The George for an evening meal and some more image reviews.



**Day 3:** Again it's an early start in the morning to try and get the best light and activity and the day will be more or less a repeat of the previous day and will go on until dusk, but if you have a long drive home you are free to go when you please throughout the day. You will have to bring your luggage with you though because we won't be going back to The George Hotel in Cley. We will be heading for the high

tide roost at Snettisham first thing in the morning so breakfast will be a continental breakfast as it is an early start. In the afternoon we will again be looking for pink-footed geese and barn owls. The weather will play an important part in this workshop so timings and locations can change so we will have to be flexible throughout the trip.



### **What to Bring**

Our accommodation is excellent and very comfortable with all bedding and towels provided so you simply need to bring yourself, any special dietary requirements you may have – please let me know if there's anything you can't/won't eat!! In terms of clothing you'll obviously need some warm and weatherproof clothing. The vast majority of your time will involve spending time outside and the weather can change and can be cold at this time of the year. The following items are very much recommended - a good pair of strong waterproof walking boots, good waterproof overtrousers. For the top half it's very much a question of having several layers available – like a t-shirt, thin jumper, fleece and then a waterproof coat at hand. The weather is difficult to predict at this time of the year it could be cold or it could be very warm. Also it might be worth considering bringing a thermos flask for tea and coffee which you can fill up at the guest house before we leave in the mornings.



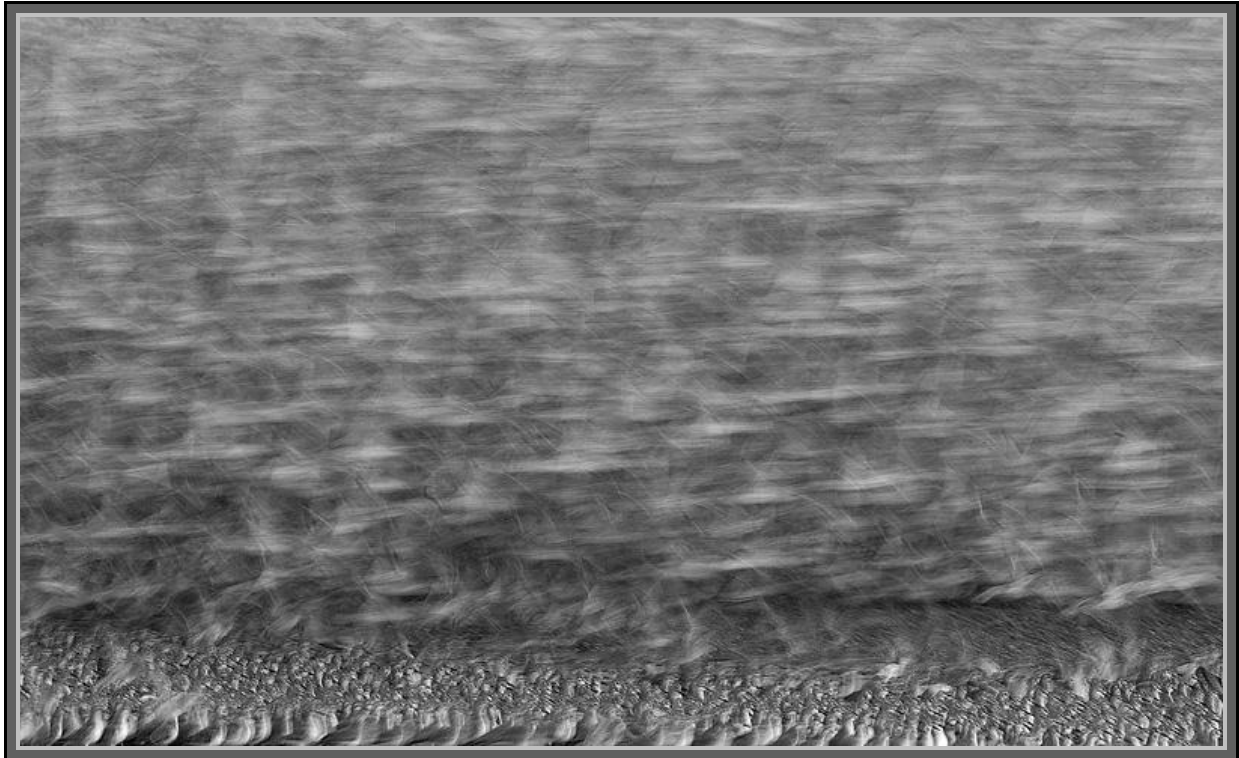
## **Camera Equipment**

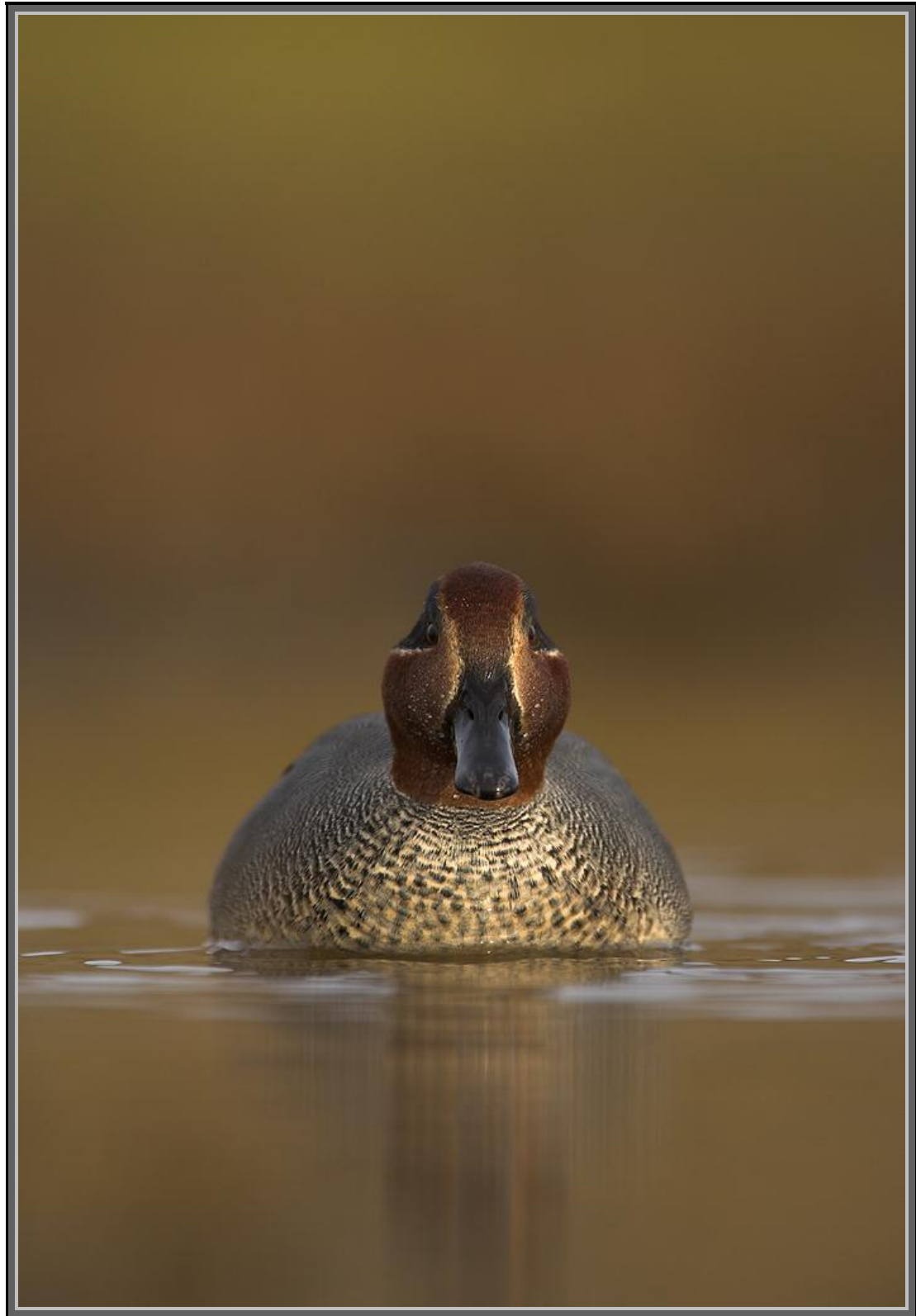
In terms of camera kit you'll need the longest lens you have (300mm or 500mm would be my recommendation/choice) and then some supplementary lenses for other opportunities such as a 24-70mm for landscapes and then maybe an intermediate zoom (70-200 or 100-400) so that you don't miss anything in terms of opportunity. My main lens will be a 500mm F4 because even though we can get close to some of the deer we will get more natural shots by being that little further away. I always use a tripod so bring one if you have one. Bring plenty of compact flash cards with you as well because if we get a good day you will take a lot of images.

During the evenings we will have a chance to critique and look at individuals work if you so wish so feel free to bring anything you'd like to share on either a laptop or memory pen/CD.

My contact number in the build up to and for the duration of the trip is **07951 945433**, and my home number is **01509 551768**. Please don't hesitate to contact me even if you think it is a minor question I am here to help.

*Danny*





Registered Office:  
4 Deer Park Drive, Newport, Shropshire TF10 7HB  
Tel: 01952 411436  
E-Mail: [sales@natures-images.co.uk](mailto:sales@natures-images.co.uk)  
[www.natures-images.co.uk](http://www.natures-images.co.uk)  
Registered in England and Wales No: 6635478  
Natures Images is the Trading Name of Natures Images Ltd